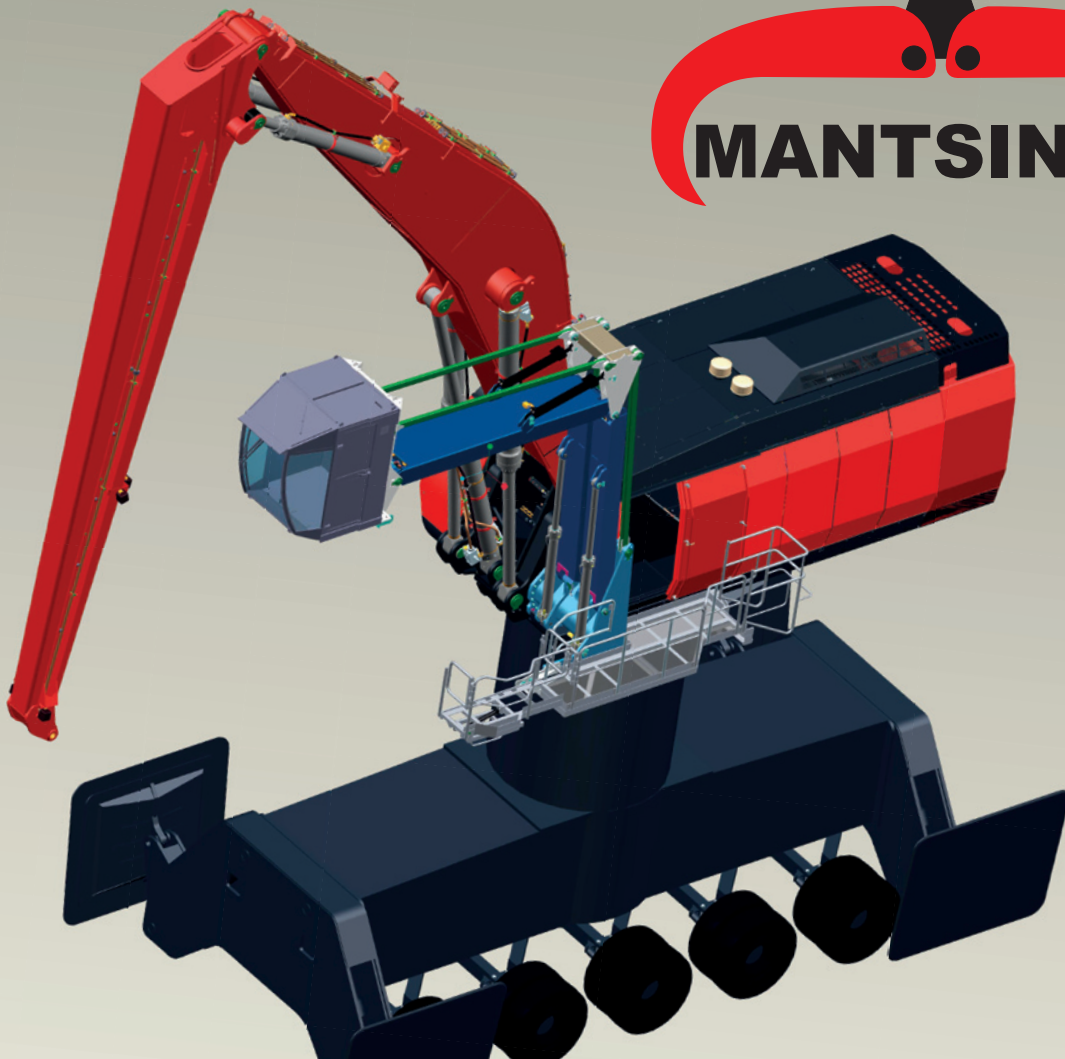


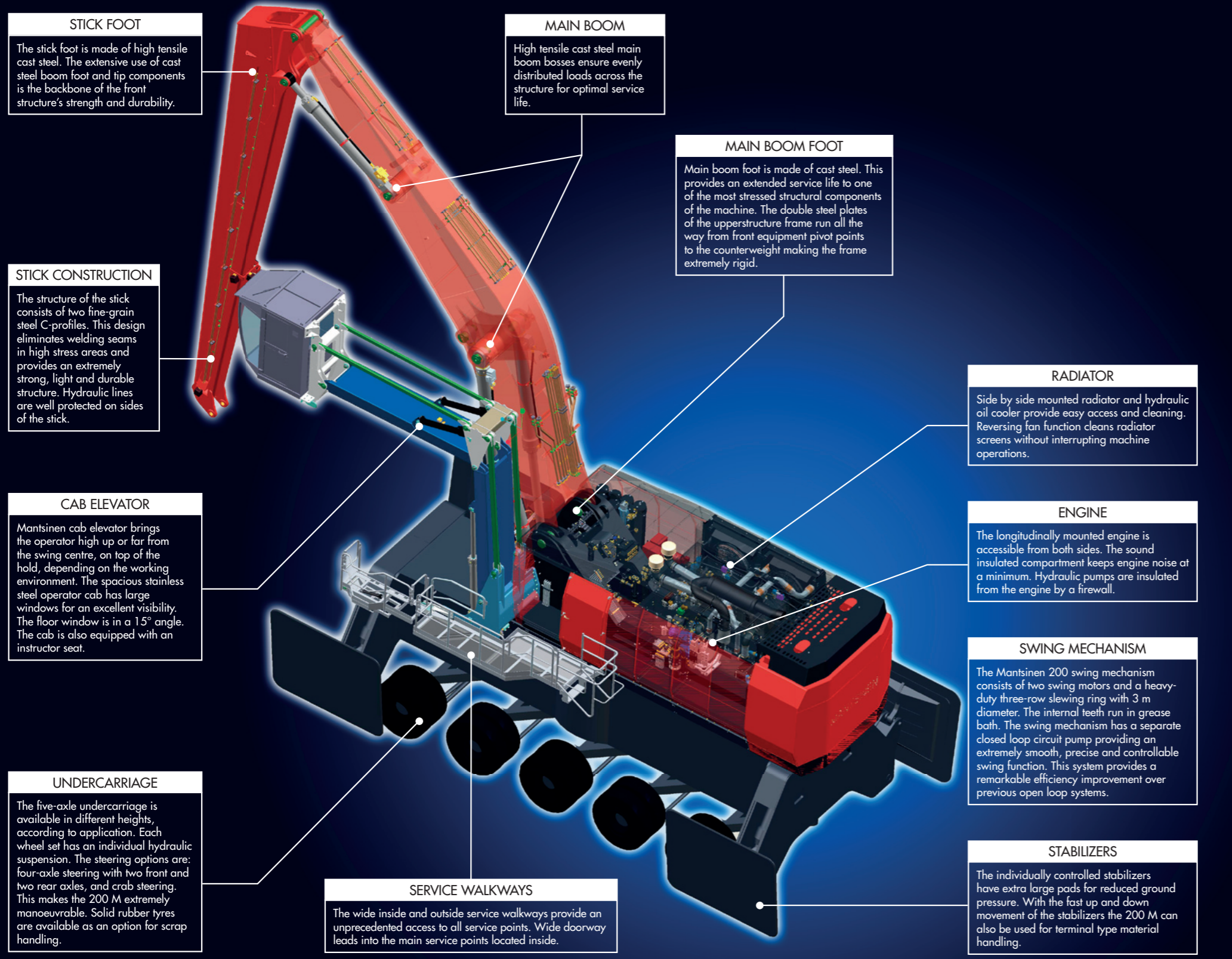
MANTSINEN 200 M



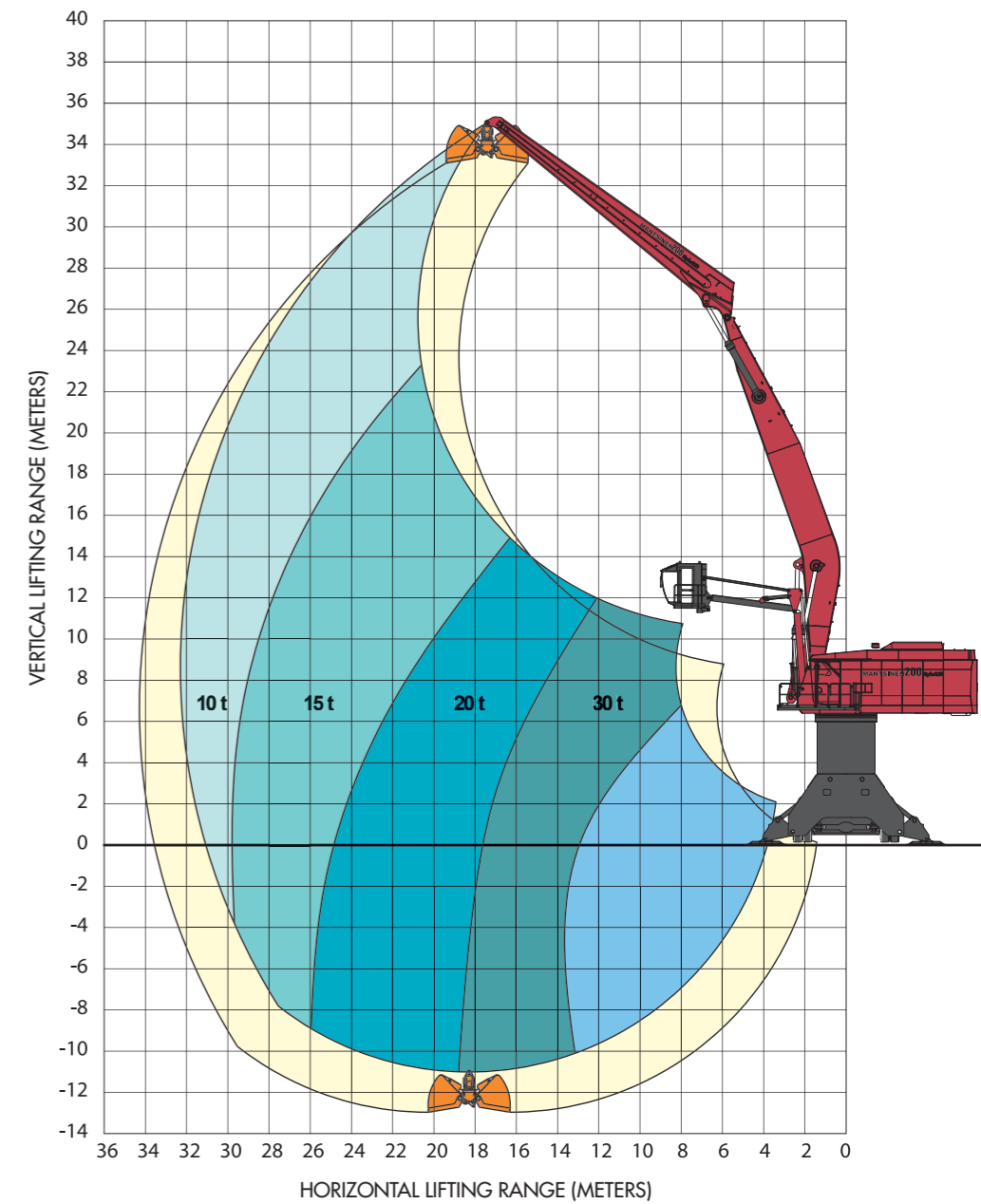
More load, less energy

MANTSINEN 200 M

Lift your efficiency to the next level with hydraulic precision



Lifting capacity ranges



More load,
less energy

MANTSINEN

MANTSINEN 200 M- Technical specifications

Front equipment	
Max. horizontal reach	35 m
Lifting capacity (approx.)	25 t / 20 m (max. horizontal reach 32 m)
Lifting capacity Heavy Lift approx. (option)	40 t / 18 m (max. horizontal reach 24 m)
Engine	
Type	Caterpillar C - 18 ACERT
Power	522 kW / 1 800 r/min
Number of cylinders	6
Displacement	18,1 l
Hydraulic system	
Oil flow, front equipment and drive	2 x 760 l/min
Oil flow, swing	500 l/min, closed loop circuit
Working pressures	Equipment 330 bar, swing 300 bar, drive 330 bar
Swing speed	0 - 5,2 r/min
Undercarriage	
Heights	3,5 m to 7 m
Number of axles	5
Wheelbase	4 x 2 000 mm
Tyres	20 x 16.00 - 25
Service brakes	Drum brakes
Parking brake	Automatic wet multi-disc brakes
Drive speed	0 - 5 km/h
Cab elevator N2-6000	
Vertical movement	Max. operator eye level approx. 14 m, with 7 m undercarriage height
Horizontal movement	11 m from swing centre
Weight without work attachment	
Depending on configuration	Approx. 230 - 250 t
Refill capacities	
Hydraulic oil reservoir	1 800 l
Fuel tank	2 000 l

Illustrated machines can have optional equipment. Specifications subject to change without prior notice.

Mantsinen Group Ltd Oy

Väläkankaantie 3,
FI-80400 Ylämylly
FINLAND

Tel. +358 20 755 1230
Fax +358 13 252 5555
www.mantsinen.com

Your dealer:

More load, less energy