

# MANTSINEN 70 M

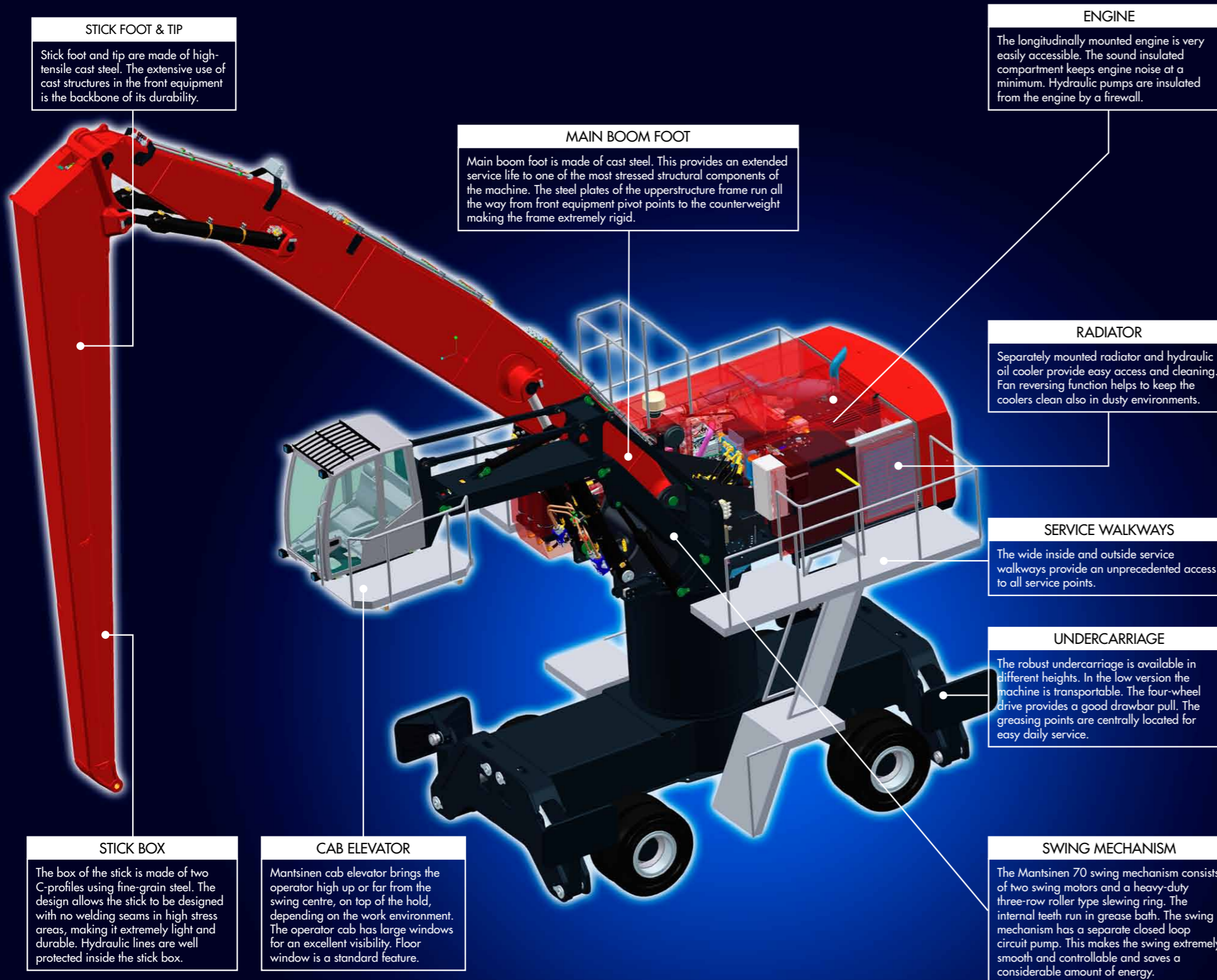


**More load, less energy**

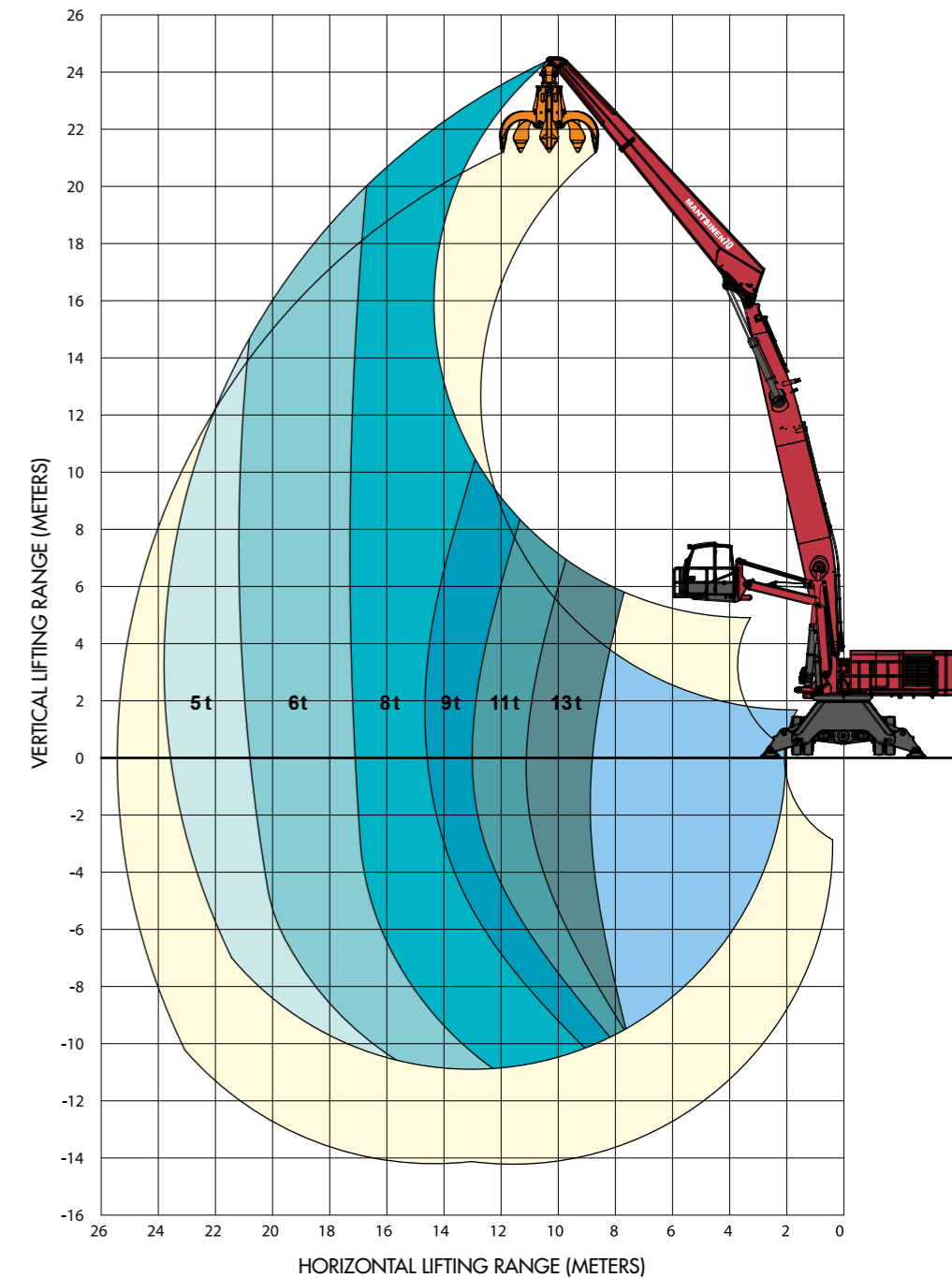


# MANTSINEN 70 M

Lift your efficiency to the next level with hydraulic precision



Lifting capacity ranges



More load,  
less energy

MANTSINEN

## MANTSINEN 70 M - Technical specifications

Front equipment	
Max. horizontal reach	24 m
Lifting capacity (approx.)	8,5 t / 16 m
Engine	
Type	Agco Sisu 84 CTA
Power	262 kW / 1 800 r/min
Number of cylinders	6
Displacement	8,4 l
Hydraulic system	
Oil flow, front equipment and drive	2 x 420 l/min
Oil flow, swing	320 l/min, closed loop circuit
Working pressures	Equipment 330 bar, swing 270 bar, drive 330 bar
Swing speed	0 – 6,7 r/min
Undercarriage	
Heights	1,9 m / 3 m / 4 m
Wheelbase	3 940 mm
Tyres	8 x 14.00 – 24 solid rubber
Service brakes	Drum brakes
Parking brake	Automatic wet multi-disc brake at front axle
Drive speed	0-12 km/h
Cab elevator N1-3000	
Vertical movement	Max. operator eye level approx. 8 m, with 4 m undercarriage height
Cab elevator N2-4000	
Vertical movement	Max. operator eye level approx. 8,5 m, with 4 m undercarriage height
Horizontal movement	Max. 7 m from swing centre
Weight without work attachment	
Depending on configuration	75 – 82 t
Refill capacities	
Hydraulic oil reservoir	800 l
Fuel tank	870 l

### MANTSINEN HybriLift® as option

Illustrated machines can have optional equipment. Specifications subject to change without prior notice.

#### Mantsinen Group Ltd Oy

Väläkankaantie 3,  
FI-80400 Ylämylly  
FINLAND

Tel. +358 20 755 1230  
Fax +358 13 252 5555  
www.mantsinen.com

Your dealer:

## More load, less energy