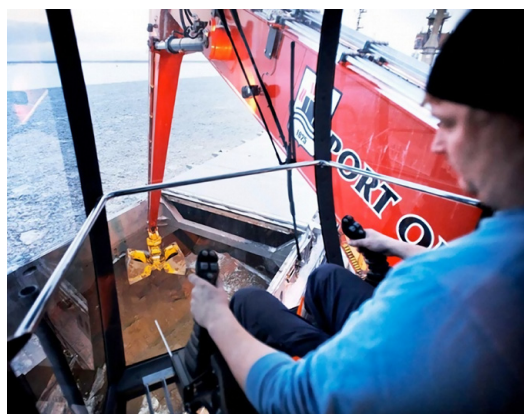


MANTSINEN 70 R



More load, less energy

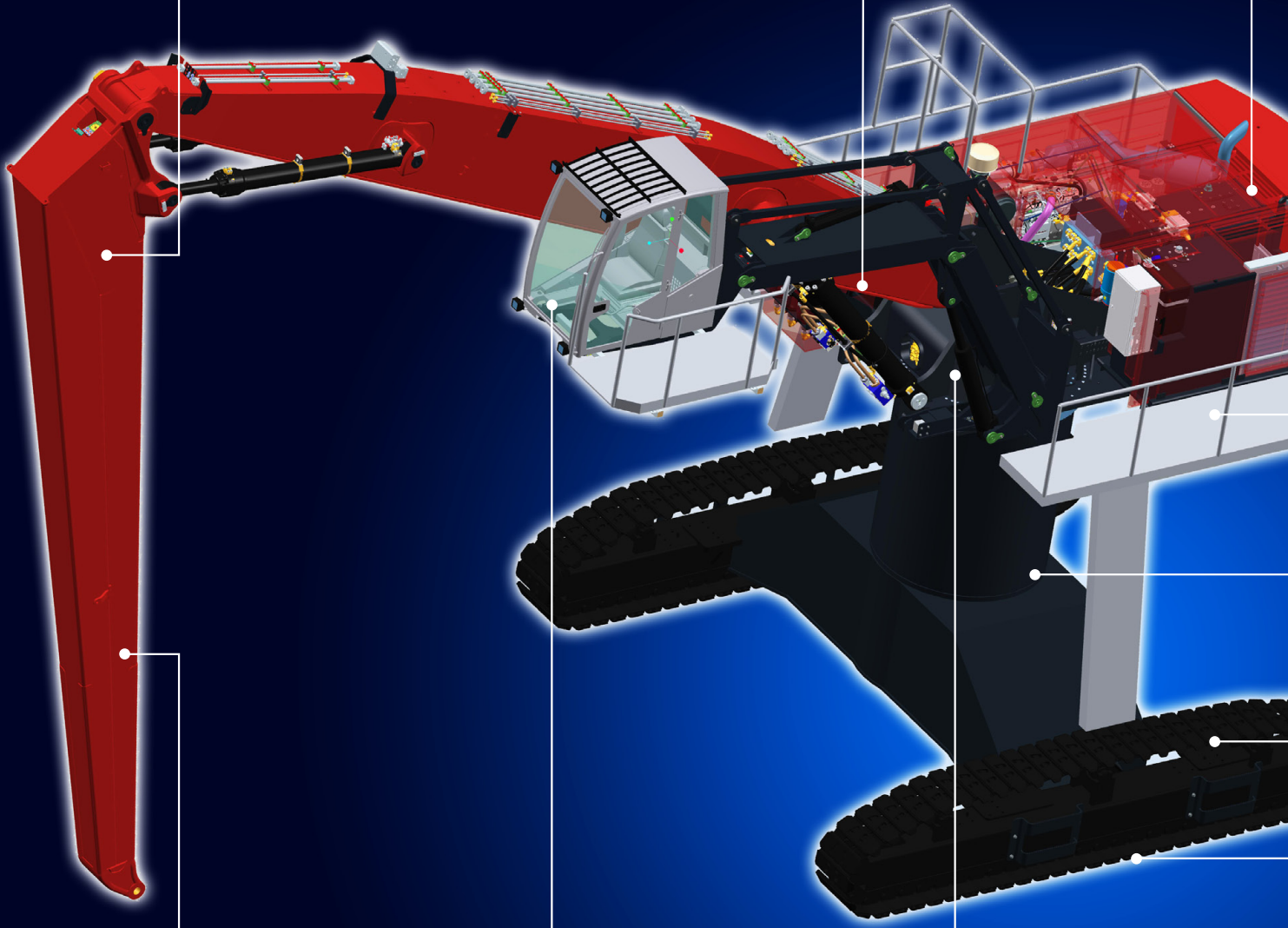
MANTSINEN 70 R

STICK FOOT & TIP

Stick foot and tip are made of high-tensile cast steel. The extensive use of cast structures in the front equipment is the backbone of its durability.

MAIN BOOM FOOT

Main boom foot is made of cast steel. This provides an extended service life to one of the most stressed structural components of the machine. The steel plates of the upperstructure frame run all the way from front equipment pivot points to the counterweight making the frame extremely rigid.



STICK BOX

The box of the stick is made of two C-profiles using fine-grain steel. The design allows the stick to be designed with no welding seams in high stress areas, making it extremely light and durable. Hydraulic lines are well protected inside the stick box.

CAB ELEVATOR

Mantsinen cab elevator brings the operator high up or far from the swing centre, on top of the hold, depending on the work environment. The operator cab has large windows for an excellent visibility. Floor window is a standard feature.

SWING MECHANISM

The Mantsinen 70 swing mechanism consists of two swing motors and a heavy-duty three-row roller type slewing ring. The internal teeth run in grease bath. The swing mechanism has a separate closed loop circuit pump. This makes the swing extremely smooth and controllable and saves a considerable amount of energy.

**More load,
less energy**

Lift your efficiency to the next level with hydraulic precision

ENGINE

The longitudinally mounted engine is very easily accessible. The sound insulated compartment keeps engine noise at a minimum.

RADIATOR

Separately mounted radiator and hydraulic oil cooler provide easy access and cleaning. Fan reversing function helps to keep the coolers clean also in dusty environments.

SERVICE WALKWAYS

The wide inside and outside service walkways provide an unprecedented access to all service points.

UNDERCARRIAGE

The robust undercarriage is available in different heights. In the low version, with optional retractable tracks, the machine is transportable. The high gantry version allows trucks or wagons to pass through.

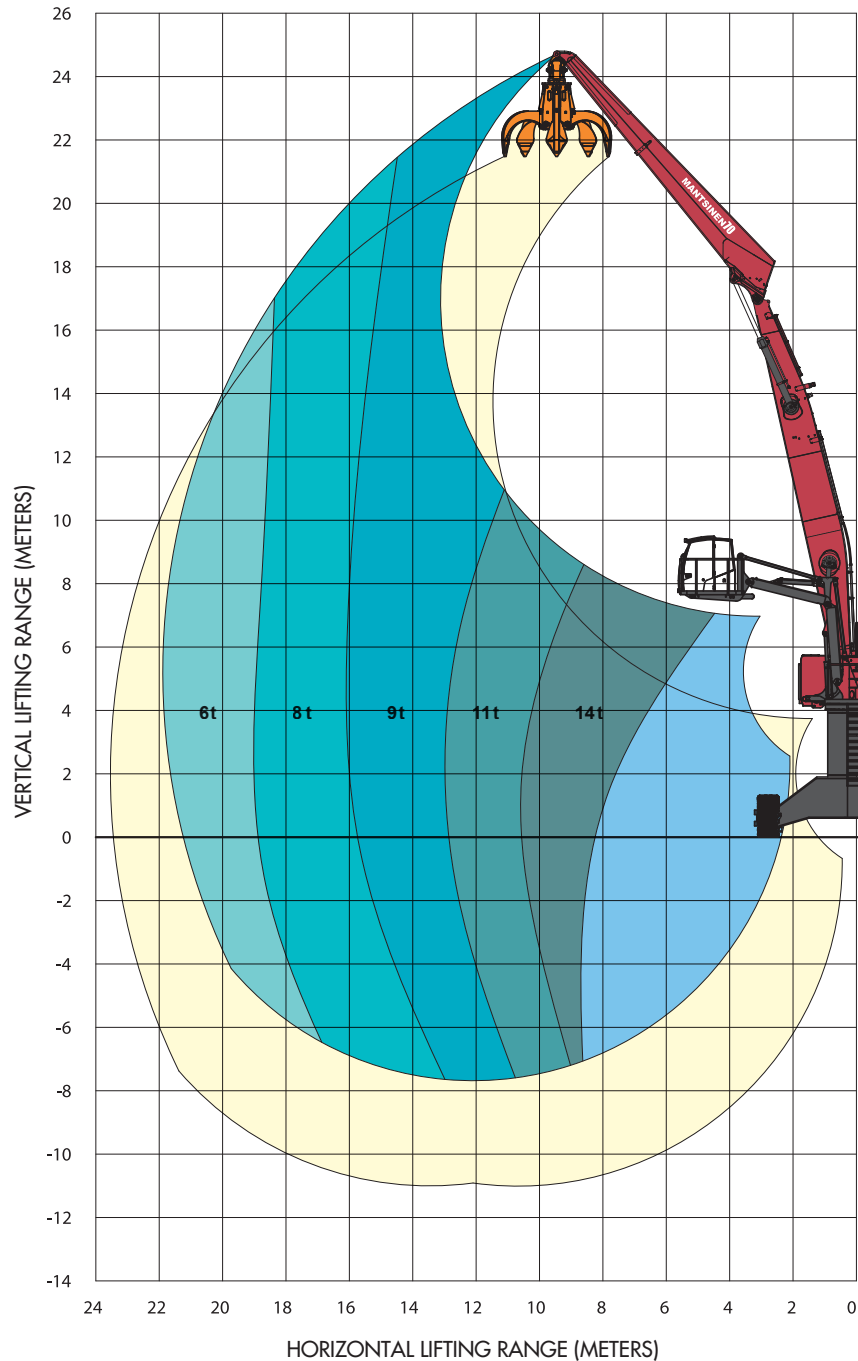
TRACKS

The tracks are long and wide apart. The machine has an excellent stability and rated loads can always be swung 360° on firm and even ground.

TRACK SHOES

The Mantsinen designed flat track shoes run smoothly on gravel, asphalt and concrete surfaces.

Lifting capacity ranges



MANTSINEN

MANTSINEN 70 R - Technical specifications

Front equipment	
Max. horizontal reach	24 m
Lifting capacity (approx.)	8,5 t / 16 m
Engine	
Type	Agco Sisu 84 CTA
Power	262 kW / 1 800 r/min
Number of cylinders	6
Displacement	8,4 l
Hydraulic system	
Oil flow, front equipment and drive	2 x 420 l/min
Oil flow, swing	320 l/min, closed loop circuit
Working pressures	Equipment 330 bar, swing 270 bar, drive 330 bar
Swing speed	0 – 6,7 r/min
Undercarriage	
Heights	1,9 m / 4 m / 6,1 m gantry
Load carrying track length	5 710 mm
Track shoes	600 or 850 mm flat shoes
Drive speeds	0 – 2,2 km/h and 0 – 3,5 km/h
Cab elevator N1-3000	
Vertical movement	Max. operator eye level approx. 8 m, with 4 m undercarriage height
Cab elevator N2-4000	
Vertical movement	Max. operator eye level approx. 8,5 m, with 4 m undercarriage height
Horizontal movement	Max. 7 m from swing centre
Weight without work attachment	
Depending on configuration	80 – 90 t
Refill capacities	
Hydraulic oil reservoir	800 l
Fuel tank	870 l

MANTSINEN HybriLift® as option

Illustrated machines can have optional equipment. Specifications subject to change without prior notice.

Mantsinen Group Ltd Oy

Väläkankaantie 3,
FI-80400 Ylämylly
FINLAND

Tel. +358 20 755 1230

Fax +358 13 252 5555

www.mantsinen.com

Your dealer:

More load, less energy