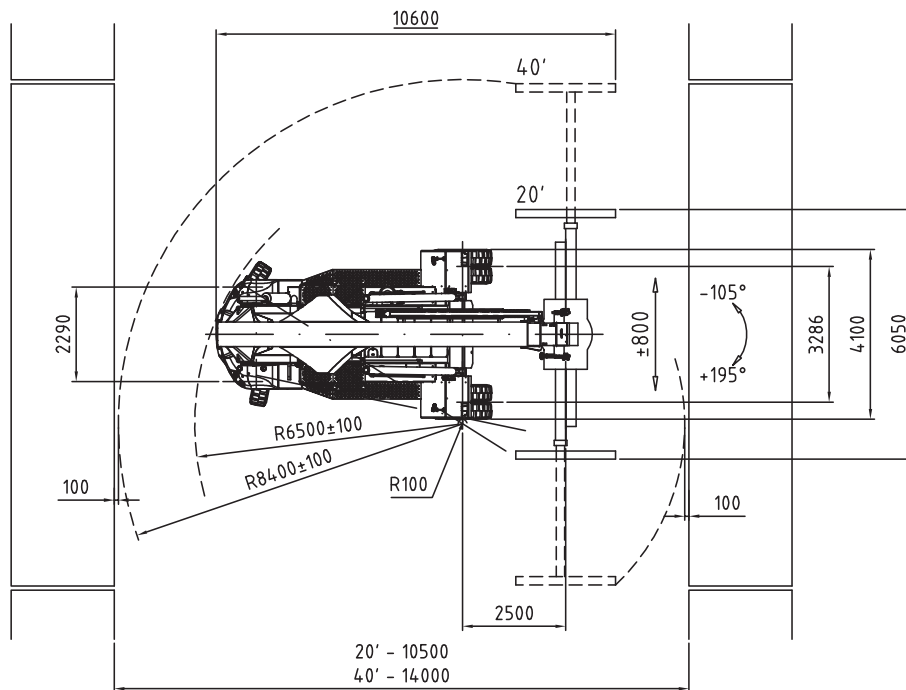
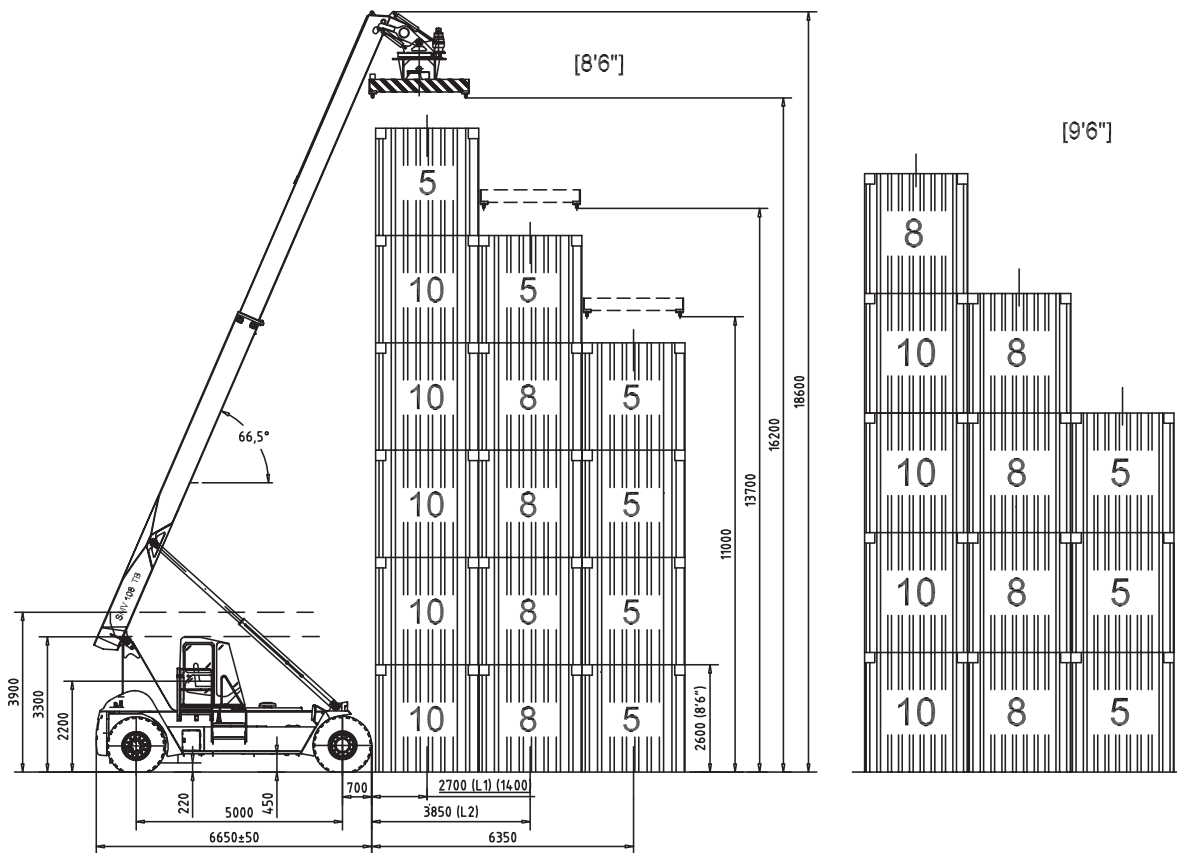


TECHNICAL DATA

Lifting data Lift capacity at loadcenter L1 / maximum height Lift capacity at loadcenter L2 / maximum height Lift speed, unloaded / 40 % load / at rated load Lowering speed, unloaded / at rated load	kg kg m/s m/s	10.000 / 5.000 8.000 / 5.000 0,55 / 0,53 / 0,40 0,45 / 0,45
Speeds Speed forward, unloaded / at rated load Speed reverse, unloaded / at rated load Incline, driving ability / at rated load at 0 km h / 2 km h Towing ability at rated load at 0 km h / 2 km h	km/h km/h % kN	30 / 30 30 / 30 28,7 / 22,9 143,6 / 118,1
Weight Service weight Axle pressure front at loadcenter L1, unloaded / at rated load Axle pressure front at loadcenter L2, unloaded / at rated load Axle pressure rear at loadcenter L1, unloaded / at rated load Axle pressure rear at loadcenter L2, unloaded / at rated load	kg kg kg kg kg	39.500 21.800 / 38.600 23.600 / 38.900 17.700 / 10.900 15.900 / 8.600
Engine (electronically controlled) Make, type designation (*EU Stage II certified) Fuel / type of engine Power ISO 3046 / at speed Torque ISO 3046 / at speed Displacement / no. of cylinders Alternator, type / power Starting battery, voltage / capacity Fuel consumption, normal driving	kW(hp) / rpm Nm / rpm W / Amp V / Ah L / h	*Volvo TAD-722-VE-HT Diesel/ 4 -stroke 180 (245) / 2300 1050 / 1400 7,15 / 6 AC / 1540 / 55 2 x 12 / 140 10-12
*EU stage III/U.S. EPA Tier 3 requires Volvo TAD 760-VE (181kW, 246 hp@2300 rpm - 1100/1500 Nm/rpm)		
Transmission with electronic controlled gear shift Gearbox, make / type designation Clutch, type Gearbox, type No. of gears, forward / reverse Drive axle, type		Dana / TE-17000 Torque converter Powershift 3 / 3 Kessler D81
Wheels No. of wheels, front / rear Wheel dimensions, front / rear / ply Pressure, front and rear	In / No Mpa	4 / 2 14.00 x 24" / PR 24 0,9
Steering and brake system Steering system Driving brake system, type / affected wheels Parking brake system, type / affected wheels		Servo assisted Wet disc brakes / Drive axle Spring brake / Drive axle
Volumes Fuel, net Hydraulic system	L L	430 600
Overload protection Hydraulic oil pressure monitoring, machinery / attachment Noise level DIN 45635 (LM inside cab)	Mpa dB (A)	Electronic system 23 / 14 68

SMV 108 TB6



060829/ 2

SMV 108 TB6 / ENG / 061108

Konecranes Liftrucks reserves the right to alter design and material specification without prior notice.

KONECRANES LIFTTRUCKS AB

Box 103
SE-285 23 Markaryd
SWEDEN

Visitors address
Anders Anderssons väg 13

Phone +46 433 73 300
Fax +46 433 73 310

www.smvliftrucks.se

E-mail
info@smvliftrucks.se