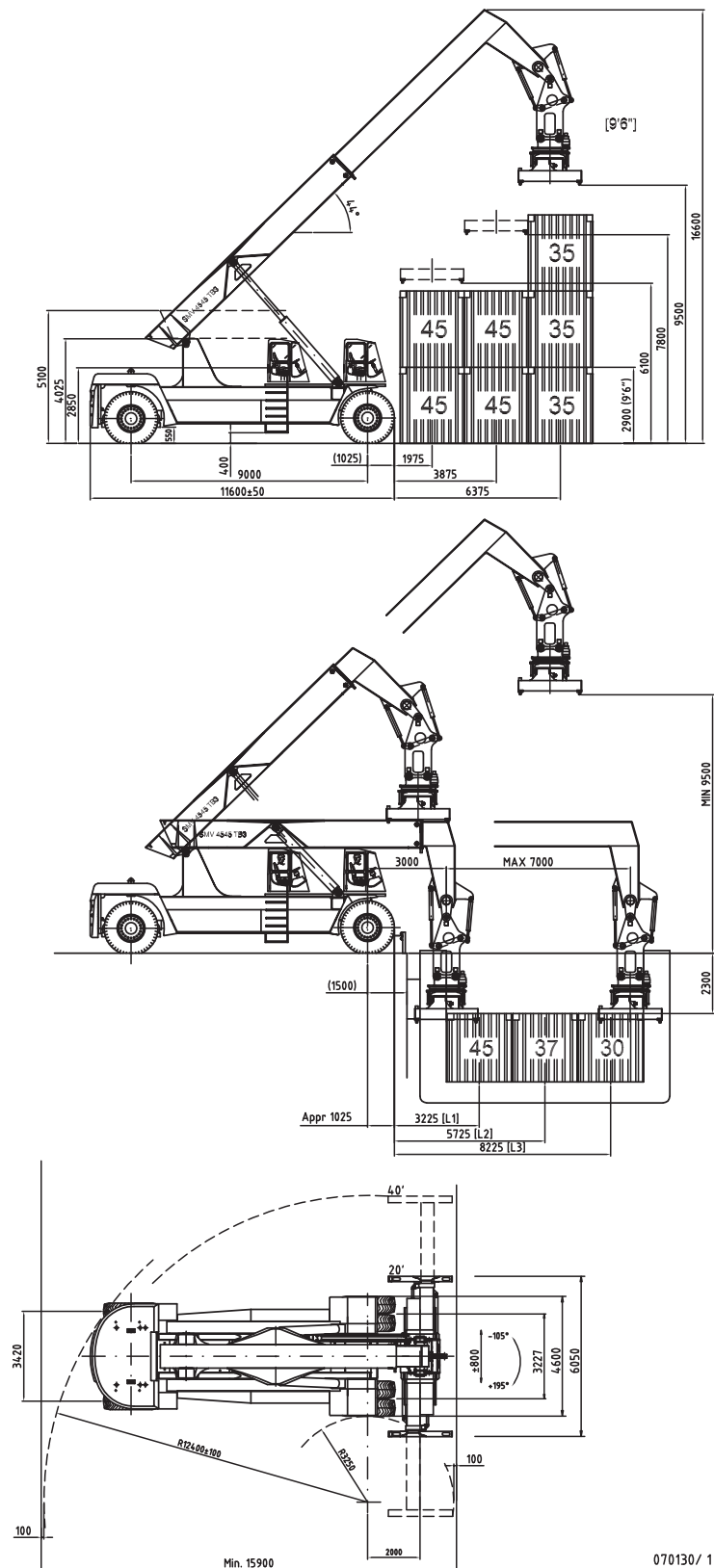


TECHNICAL DATA

Lifting data Lift capacity at Container row 1 / Barge row 1 (1975 / 3225) Lift capacity at Container row 2 / Barge row 2 (3875 / 5725) Lift capacity at Container row 3 / Barge row 3 (6375 / 8225) Lift speed, unloaded / 40 % load / at rated load Lowering speed, unloaded / at rated load	kg kg kg m/s m/s	45000 / 45000 37000 / 37000 30000 / 30000 0,28 / 0,26 / 0,16 0,25 / 0,35
Speeds Speed forward, unloaded / at rated load Speed reverse, unloaded / at rated load Incline, driving ability / at rated load at 0 km h / 2 km h Towing ability at rated load at 0 km h / 2 km h	km/h km/h % kN	25 / 20 25 / 20 22 / 16 356 / 275
Weight Service weight Axle pressure front at loadcenter L1, unloaded / at rated load Axle pressure front at loadcenter L2, unloaded / at rated load Axle pressure front at loadcenter L3, unloaded / at rated load Axle pressure rear at loadcenter L1, unloaded / at rated load Axle pressure rear at loadcenter L2, unloaded / at rated load Axle pressure rear at loadcenter L3, unloaded / at rated load	kg kg kg kg kg kg kg	105200 52000 / 118300 57300 / 122100 62700 / 123600 53200 / 31900 47900 / 20100 42500 / 11600
Engine (electronically controlled) Make, type designation (*EU Stage II certified) Fuel / type of engine Power ISO 3046 / at speed Torque ISO 3046 / at speed Displacement / no. of cylinders Alternator, type / power Starting battery, voltage / capacity Fuel consumption, normal driving	kW(hp) / rpm Nm / rpm W / Amp V / Ah L / h	*Scania DC-12-56A Diesel / 4 -stroke 294 (401) / 2100 1800 / 1400 6 / 17:1 AC / 1820 / 65 2 x 12 / 140 19-22
<small>*EU stage III requires Scania DC-12-55A (294kW, 401 hp@2100 rpm - 1850/1400 Nm/rpm)</small>		
Transmission with electronic controlled gear shift Gearbox, make / type designation Clutch, type Gearbox, type No. of gears, forward / reverse Drive axle, type		Dana / TE-32000 Torque converter Powershift 4 / 4 Kessler WDB, D111 PL351
Wheels No. of wheels, front / rear Wheel dimensions, front / rear / ply Pressure, front and rear	In / No Mpa	4 / 2 21.00 x 35" / PR 40 1,0
Steering and brake system Steering system Driving brake system, type / affected wheels Parking brake system, type / affected wheels		Servo assisted Wet disc brakes / Drive wheels Spring brake / Drive wheels
Volumes Fuel, net Hydraulic system	L L	700 950
Overload protection Hydraulic oil pressure, machinery / attachment Noise level DIN 45635 (LM inside cab)	Mpa dB (A)	Electronic system 24 / 14 68

SMV 4545 TB3 (BH)

KONECRANES®



SMV 4545 TB3 (BH) / ENG / 070205

070130 / 1

Konecranes Liftrucks reserves the right to alter design and material specification without prior notice.

KONECRANES LIFTTRUCKS AB

Box 103
SE-285 23 Markaryd
SWEDEN

Visitors address
Anders Anderssons väg 13

Phone +46 433 73 300
Fax +46 433 73 310

www.smvliftrucks.se

E-mail
info@smvliftrucks.se